

DESIGNED AND ENGINEERED PUMPING SOLUTIONS



# DAE Pumps

Designed And Engineered Pumping Solutions

**VISIT SITE NOW »**

## Growler 1000

**8-in Hydraulic Dredge Pump  
with 2 Side Agitators**



**DAEPUMPS.COM**

info@daepumps.com

(760) 821-8112



# DAE Pumps

Designed And Engineered Pumping Solutions

**VISIT SITE NOW »**



## GROWLER 1000

### 8-in Hydraulic Dredge Pump with 2 Side Agitators

The DAE Pumps Growler 1000 Hydraulic Dredge Pump with 2 Side Agitators is a highly durable and reliable dredge pump for transporting solids and a variety of other materials.

Built with two heavy-duty excavator-grade agitators. The industry's top dredge pump can move up to 78-254 cubic yards of solids per hour between 1056 to 3432 GPM. The DAE Pumps Growler 1000 provides non-clogging suction power to excavate and pump some of the most challenging dredging situations.

The suction power of the mighty pump can handle solids up to 1.75-in moving up to 70% solids by weight through a 8-in discharge.



**8-Inch Pump**



**1056 - 3432 GPM**



**2 Side Agitators**



**Solids Handling up to 1.75 in**



**Up to 70% Solids by Weight**



**Highly Durable Abrasion Resistant**



**Over 185 Ft Head**



**Interchangeable Hard Tooth Cutter Heads**



**Robust Motor for Strong Torque**

**VISIT SITE NOW »**





# DAE Pumps

Designed And Engineered Pumping Solutions

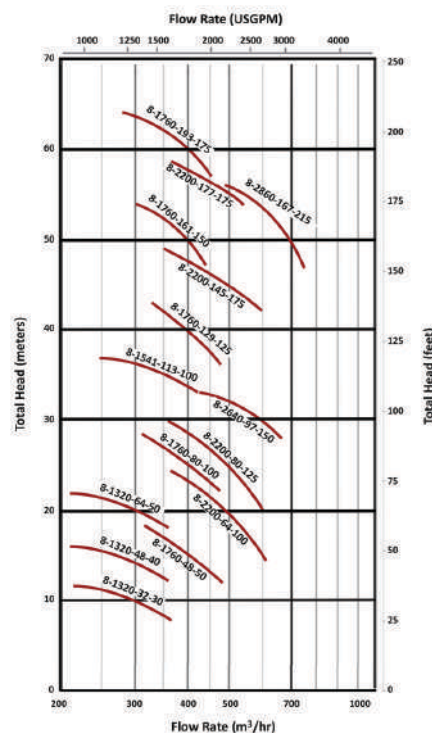
**VISIT SITE NOW »**

## 8-in Growler 1000

### Pump Models

Model	GPM	Head (Ft)	HP	Yards <sup>3</sup> /Hour
Growler 1000-8-1320-32-30	1056	36	30	78
	1320	32		98
	1584	28		117
Growler 1000-8-1320-48-40	1056	55	40	78
	1320	48		98
	1584	42		117
Growler 1000-8-1320-64-50	1056	74	50	80
	1320	64		98
	1584	58		117
Growler 1000-8-1541-113-100	1078	122	100	80
	1540	113		114
	1848	103		137
Growler 1000-8-1760-48-50	1232	55	50	91
	1760	48		130
	2112	42		156
Growler 1000-8-1760-80-100	1232	87	100	91
	1760	80		130
	2112	71		156
Growler 1000-8-1760-129-120	1232	132	120	91
	1760	129		130
	2112	126		156
Growler 1000-8-1760-161-150	1232	171	150	91
	1760	161		130
	2112	151		156
Growler 1000-8-1760-193-175	1232	206	175	91
	1760	193		130
	2112	177		156
Growler 1000-8-2200-64-100	1540	73	100	114
	2200	64		163
	2640	57		196
Growler 1000-8-2200-80-120	1540	87	120	114
	2200	80		163
	2640	71		196
Growler 1000-8-2200-145-175	1540	154	175	114
	2200	145		163
	2640	132		196
Growler 1000-8-2200-177-175	1540	190	175	114
	2200	177		163
	2640	167		196
Growler 1000-8-2640-97-150	1848	106	150	137
	2640	97		196
	3168	87		235
Growler 1000-8-2860-167-215	2002	180	215	148
	2860	167		212
	3432	142		254

### Pump Curve



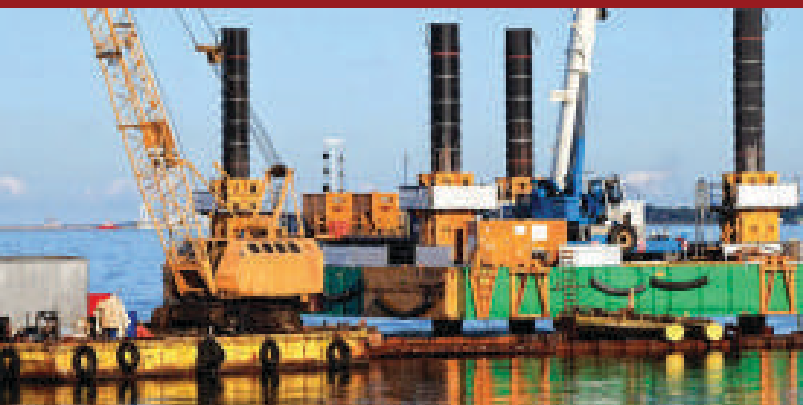
### Side Agitators

Available in Multiple Powers Options

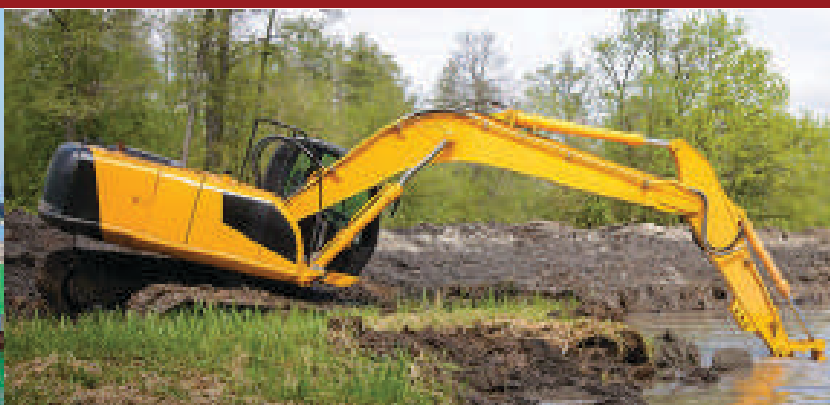
**5 HP / 7.5 HP**

**10 HP / 15 HP / 20 HP**

### Cable Deployed Dredge Pump



### Excavator Mounted Dredge Pump



**VISIT SITE NOW »**






[VISIT SITE NOW >>](#)

## HYDRAULIC SLURRY PUMPS

Durable Hydraulic slurry pumps. Versatile and rugged solution for the transfer of abrasive and high-density slurries in mining, civil construction, industry, and other heavy-duty applications.

### Versatile Heavy Duty Solution

Growler 1000 series are heavy-duty, hydraulic submersible slurry pumps designed to handle a wide range of slurries and abrasive particles in submersible applications in mining and industry.

Growler pumps feature a rugged construction using the highest quality materials to ensure reliable performance and excellent service life. The high-quality hydraulic motors incorporate multiple protection features to detect the ingress of water or excessive temperatures to shut off the pump and prevent damage.

### Large Cut Water Clearance

The pump casing features a large cut water clearance which allows the easy passage of large solids and reduces wear and erosion to improve service life and prevent loss of efficiency.

### Integral Agitator

The 27% chrome white iron agitator assists in pumping slurries by breaking up large particles and agitating high concentrations of solids.

### Heavy Duty Construction

The pump casing, impeller, backplate, and agitator are manufactured from high-quality 27% chrome white iron. This extremely tough construction material can withstand continuous use in heavy-duty applications and allows the pump to transfer abrasive and dense slurries with minimal wear. The pumps feature a replaceable back plate allowing for simple servicing and easy replacement of worn components.

### Motor Insulation

Motor insulation is used to ensure reliable operation in heavy-duty applications in temperatures up to +70 °C.

### Support Frame and Strainer

A heavy-duty mild steel frame with a round base and strainer provides excellent stability and durability whilst preventing blockages.



### Double Mechanical Seal

A double mechanical seal provides excellent shaft sealing between the hydraulic motor and the wet end. The seals are oil bath lubricated and feature carbon/ceramic seal faces in the wet end and tungsten ceramic faces in the drive end to provide excellent durability and service life across a wide range of duties and applications.

### Oil Chamber Leakage Probe

The oil chamber incorporates a water leakage probe which detects when the water-to-oil ratio is too high and automatically shuts down the motor to prevent damage.

### Motor Float Switch

A float switch is located in the bottom of the motor to detect the ingress of water and shut down the motor to prevent damage due to shorting out.

### Motor Temperature Sensors

Temperature sensors are located in the motor stator to detect excessive temperatures and can shut down the motor to prevent damage due to overheating.

### Thrust Bearing Sensors

Temperature and moisture sensors are located in the motor thrust bearings to detect excessive temperatures and the ingress of water and shut down the motor to prevent bearing failure.

### Optional External Cooling

Cooling jackets can be provided with an external water supply in high-temperature applications to keep the motor temperature down and prevent excessive stator and bearing damage.

[VISIT SITE NOW >>](#)
